

EQUIP. TYPE R390A/URR SER. NO. \_\_\_\_\_

COL. 541 5249 002

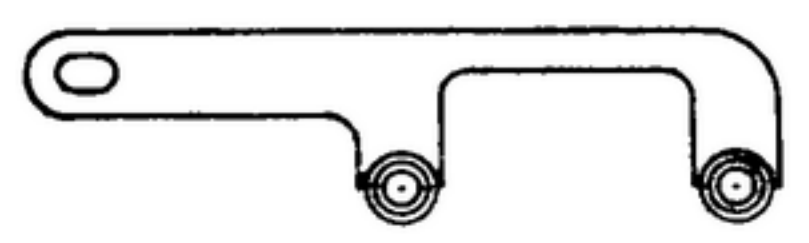
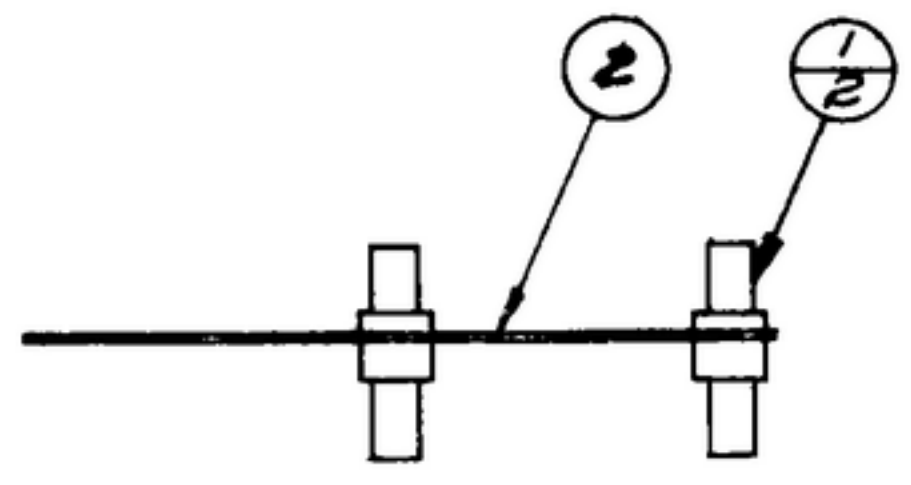
NOTES: THESE GOVERNMENT DRAWINGS, SPECIFICATIONS, OR OTHER DATA ARE USED FOR ANY PURPOSE OTHER THAN IN CONNECTION WITH A DEFINITELY RELATED GOVERNMENT PROCUREMENT OPERATION. THE UNITED STATES GOVERNMENT THEREBY INCURS NO RESPONSIBILITY FOR ANY DELAY OR DAMAGE WHATSOEVER, AND THE FACT THAT THE GOVERNMENT MAY HAVE FORWARDED, FURNISHED, OR IN ANY WAY SUPPLIED THE SAID DRAWINGS, SPECIFICATIONS, OR OTHER DATA IS NOT TO BE REGARDED BY REPLICATORS OR OTHERS AS IN ANY MANNER LIMITING THE SOLE OR ANY OTHER FORMS OF REPRODUCTION, OR CONVEYING ANY RIGHTS OR PERMISSION TO REPRODUCE, USE, OR SELL ANY PATENTED INVENTION THAT MAY IN ANY WAY BE RELATED THERETO.

THIS DOCUMENT HAS BEEN FURNISHED BY THE GOVERNMENT AND MAY BE REPRODUCED AND USED IN CONNECTION WITH ANY GOVERNMENT PROCUREMENT OR MAINTENANCE OPERATION.

\* FOR INFORMATION ONLY. CONTRACTOR MAY AT HIS OPTION DEVIATE FROM THESE PROCESS DETAILS.

~~X SWE APPROVAL~~  
SYM PR10042-9

REVISIONS			
SYM	DESCRIPTION	DATE	APPROVAL
A <sub>3</sub>	A <sub>1</sub> ADDED ITEM 3 A <sub>2</sub> REMOVED FINISH NOTE A <sub>3</sub> REPLACED COLLINS PART NOS WITH SWE PART NOS.	4 NOV 59	4242B-PC 59-AI-SI REV'D PME



A<sub>2</sub>

NOTES:  
1. SOLDER CLIP (2) TO SPACERS (1) AS SHOWN, SOLDER SHALL BE COMP. SN60 PER SPEC QQ-5571.  
2. IN ALL SPLIT BALLOON STOP FIGURE IS MATERIAL LISTS ITEM INDICATOR & BOTTOM FIGURE IS QUANTITY.

A<sub>1</sub>

A<sub>3</sub>

QTY	AS REQ'D	ITEM	REQD	PART NO.	DESCRIPTION	MATL	MATL SPEC
3	1	1	2	SM-B-283247	CLIP-GROUND		
1	2	2	1	SM-B-283248	SPACER		

LIST OF MATERIAL

COLLINS PART NO. 5580509002

COLLINS NO.	QTY	NEXT ASSY	USED ON
5580451004	1	SM-D-249100	SC-DL-248775

DRAWN NUGEN CHECKED Plan APPROVED \_\_\_\_\_

UNLESS OTHERWISE SPECIFIED:  
DECIMAL DIMENSIONS INCLUDING HOLE SIZES MAY VARY ±.005  
FRACTIONAL DIMENSIONS INCLUDING HOLE SIZES MAY VARY ±1/64  
MACHINED ANGLES MAY VARY ±.1°  
SHEARED ANGLES MAY VARY ±.25°  
BROKEN ANGLES MAY VARY ±.1°  
ECCENTRICITY BETWEEN ANY DIAMETERS ON THE SAME CENTERLINE SHALL NOT EXCEED .010 TOTAL INDICATOR READING.  
ALL DIMENSIONS ARE FINISH DIMENSIONS INCLUDING APPLIED FINISH AND ARE GIVEN IN INCHES.

COLLINS-RADIO CO.  
OSCAR RAPIDS, IOWA  
14214-PH-51-93  
SIGNAL CORPS  
REVIEWED PME  
APPROVED HLV  
PME  
DATE 29 MAR 50 SCALE 1/1

SPACER ASSY

DEPARTMENT OF THE ARMY  
SIGNAL CORPS ENGINEERING  
LABORATORIES  
FORT MONMOUTH NEW JERSEY  
SM-B-249156